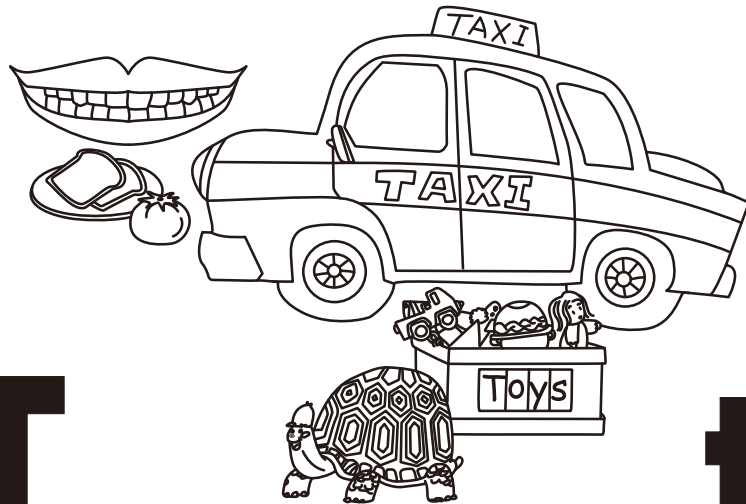




Letters T and t

(Visit www.alyssaliang.com for more free learning material.)

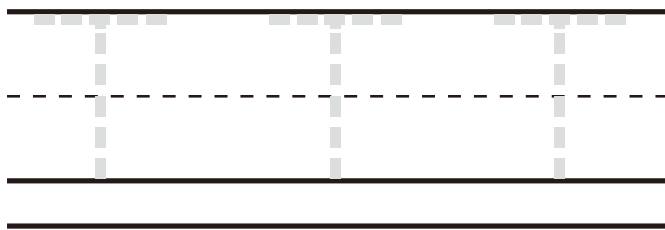
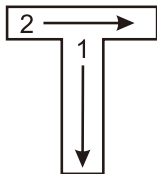
1. Say the name of the letter and its sound.



T

t

3. Trace the letters.



2. Follow the letters T and t to help the teacher find the taxi.



A maze puzzle where the path starts from the teacher and ends at a taxi. The path is formed by the letters T and t. The maze contains various objects and letters:

- Top right: A spiral.
- Top row: L, I, S, s, S, S
- Middle right: A slide.
- Middle row: T, t, T, t, C, c, C, C
- Bottom right: A toy store with alphabet blocks (A, B, C, D, E, F, G) and a table with chairs.
- Bottom row: t, T, T, t, T, t, T
- Bottom right: A taxi.