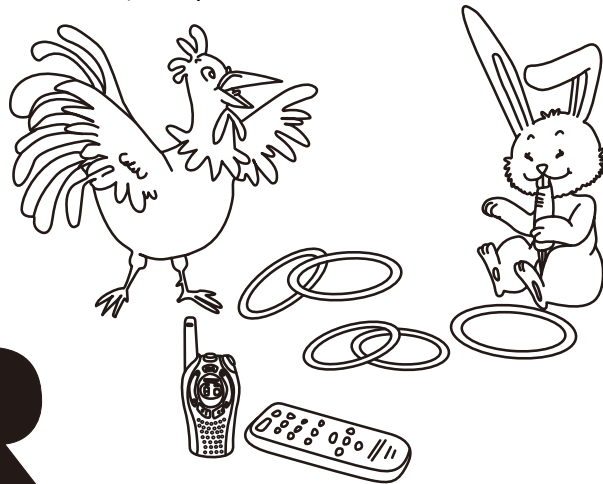




Letters R and r

(Visit www.alyssaliang.com for more free learning material.)

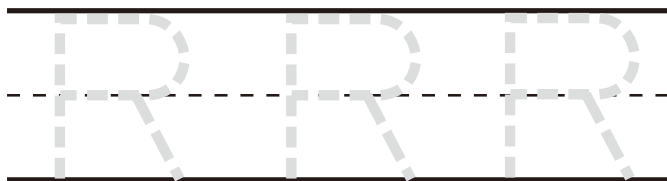
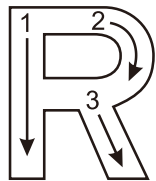
1. Say the name of the letter and its sound.



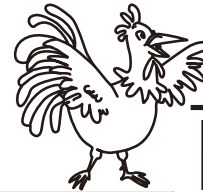
R

r

3. Trace the letters.



2. Follow the letters R and r to help the rooster find the rabbit.



A maze puzzle where the path is formed by the letters R and r. The path starts at a rooster and ends at a rabbit. The path includes the following letters: R, E, e, E, e, r, r, R, R, r, r, R, R, r, T, t, h, H, r, R, r, H, R, R, r, R.

